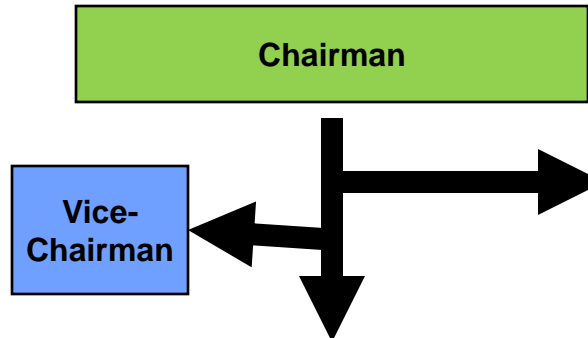


Proposed Structure

Notes:

- Region Board – Director/Treas/Secr/At-large
- Region Liaisons can hold multiple positions
- All Executive Directors Vote, State Chairman is Tie Breaker Vote Only



Non-Voting State Directors

- Public Relations Director-
- Membership Director-
- Fundraising Director-
- General Counsel Director-
- Webmaster

	Youth Director	FS/GR Director	Women's Director	Officials Director	Treasurer	Secretary
North Region Director	North Youth Liaison	North FS/G Liaison	North Women's Liaison	North Officials Liaison	North Treasurer	North Secretary
South Region Director	South Youth Liaison	South FS/G Liaison	South Women's Liaison	South Officials Liaison	South Treasurer	South Secretary
Central Region Director	Central Youth Liaison	Central FS/G Liaison	Central Women's Liaison	Central Officials Liaison	Central Treasurer	Central Secretary
West Region Director	West Youth Liaison	West FS/G Liaison	West Women's Liaison	West Officials Liaison	West Treasurer	West Secretary
Far West Region Director	Far West Youth Liaison	Far West FS/G Liaison	Far West Women's Liaison	Far West Officials Liaison	Far West Treasurer	Far West Secretary

A Non-Profit Organization



TEXAS - USA WRESTLING, INC.

THE STATE AFFILIATE OF THE NATIONAL GOVERNING BODY